

Questions and Answers Regarding Pope Resources' Timber Harvest on Kitsap County's Port Gamble Heritage Park

Why is Pope Resources harvesting within Kitsap County's Port Gamble Heritage Park?

Since 2007 Pope Resources has been working with a broad coalition of stakeholders as part of the Kitsap Forest and Bay Project to conserve portions of their forestland in North Kitsap, and prevent development. In the early stages of this approach, Pope Resources sold nearly 1,170 acres into conservation, including both the timberland and development rights. In December of 2016, Pope Resources sold 1,360 acres of land in their Port Gamble block to Kitsap County. However, Pope Resources retained the right to harvest the standing timber for 25 years. After Pope Resources replants, those new trees will belong to Kitsap County. There is a fundraising effort underway to purchase development rights, and in some areas, potentially purchase standing timber, of an additional 1,645 acres to help achieve the Kitsap Forest and Bay Project's conservation goals.

Why are the existing trees not purchased for conservation?

Buying land and not timber allows for more acres to be conserved. Pope Resources sold the 1,360 acres without trees for \$2.36 million, funded by a legislative appropriation through the Department of Ecology (DOE). Had Pope Resources sold this same land with the trees, the DOE appropriation would have only conserved approximately 250 acres. Buying the land only allowed 1,110 more acres to be permanently protected from development. After the 25 year period is completed, Pope Resources will no longer have any harvesting rights and Kitsap County will own both the land and trees.

What trees will be replanted?

Pope Resources is responsible for planting as required by Washington State's Forest Practices Regulations. Kitsap County and Pope Resources will coordinate to plant native species that will provide for a more diverse future stand to develop over time.

Where is the harvest occurring?

Pope Resources is harvesting 80 acres adjacent to the Kitsap County Shoreline Park, see the attached map for the specific location.

When is the harvest happening?

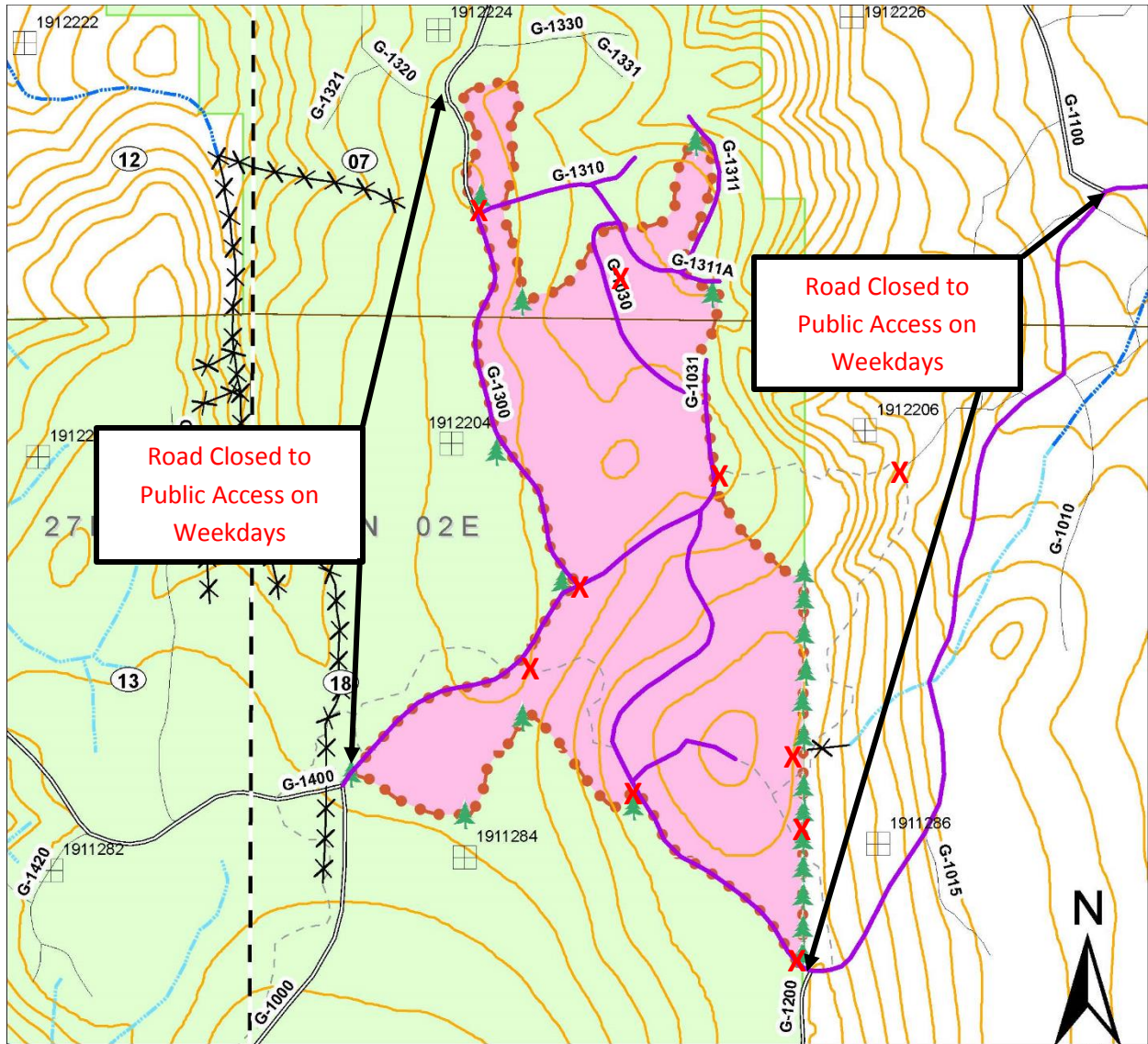
Over the 25 year time frame, harvesting will occur periodically. The first harvest is expected to begin on the last week of September of 2017 and may last through January of 2018.

Who can I contact for more information?

Please feel free to contact Adrian Miller at amiller@orminc.com if you have any questions about the harvest or the conservation strategy.

What areas will be closed to public access?

During active harvest operations, the harvest area, trails, and roads internal to the harvest area will be closed to public access. This includes the following trails; Hope: E.T., and portions of Ewok and Ranger. Roads accessing the area will remain open, however, the public should expect log truck and other vehicle traffic. Closed areas will be delineated in the field and the public must respect these closures for both the contractor's and the public's safety. Willful violations of the closures will be reported to law enforcement.



- Haul Route (closed to public access on weekdays as indicated on map) ———
- Harvest Area (closed to public access at all times)
- Road or Trail (closed to public access at all times) X

